



*Wendel grants exclusivity to
TE Connectivity for the sale of Deutsch*

November 30, 2011



Deutsch in a nutshell

Present in over **25 countries**

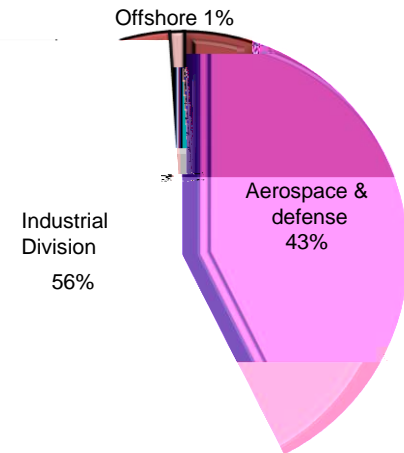
9 factories worldwide

3,600 employees worldwide

~80% of connectors custom-made

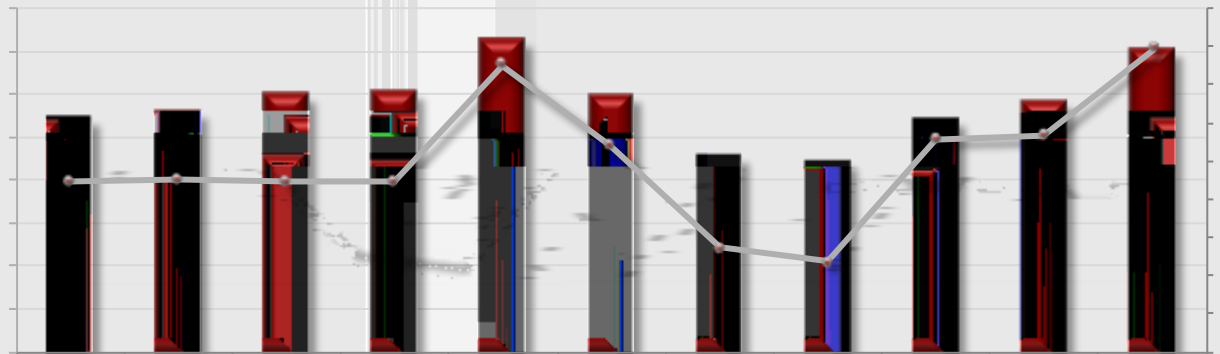
A world leader in harsh environments connectors

Sales breakdown



Based on H1 2011

**Half-year sales
and operating
income since
2006**



TE Connectivity

An industrial buyer

World leader in connectivity

\$14.3 billion revenues

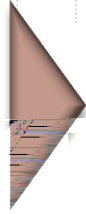
18% EBITDA margin

Headcount : 95,000 people

Balanced geographic presence and strong distribution network

Deutsch and TE Connectivity
A new development phase for Deutsch

2006



Wendel acquisition of Deutsch

Sale of Deutsch

A project strengthening Wendel's strategy

This project gives Wendel additional means to:

Accelerate the investment strategy

Pursue the deleveraging



**2 key strengths in the
current economic
context**